

Discovering Homa's Heartbeat:

COOLING MANUFACTURING



Scan to Download
Digital Version

WE TAKE CARE OF
YOUR DREAMS



Scan to Watch Echoes of Manufacturing, Showcasing Homa's Excellence in Efficiency, Quality, And Digitalisation.



Discover The Flagship of Our Manufacturing - New Production Hub



HOMA

YOUR PARTNER OF CHOICE

At Homa, manufacturing is the heartbeat of our business.

Since starting as a small factory in 2002, we have remained committed to one enduring aspiration: to be the world's partner of choice.

Over two decades, we have grown alongside the global industry to become a leading cooling manufacturer.

In a highly competitive sector, we know that scale and consistent quality are the foundation of success.

For this reason, we have continually invested in our production footprint and efficiency to build trust and deliver future-ready solutions.

In 2025, Homa established its first overseas manufacturing base, enabling a more effective response to market uncertainties.

Our operations are supported by our China-based Homa Institute of Technology and four production hubs worldwide, working under unified standards to ensure consistent product quality.

As our global footprint expands, our focus remains the same:

to be the partner of choice in cooling sourcing, building trust with every product we deliver.

Michael Yao

CEO of Homa Appliances

CONTENTS

01 Production Footprint

02 Smart Manufacturing

03 Care Culture



Benchmark Factories



1

HOMA Production Footprint

The world's first, biggest,
and best cooling production base

THE TRUE **COOLING SPECIALIST**

Homa ranks TOP4 among the world's top 6 cooling manufacturers with over 13 million units produced annually. With a well-established manufacturing network in China and an expanding global footprint, we leverage our strategy to deliver competitive, customer-centric cooling solutions worldwide.

NO.1

Refrigerator Exporter
for 17 Years

NO.1

Refrigerator Exporter to EU
for 18 Years

TOP4

Cooling Producer
in China

TOP4

Cooling Producer
in the World

UNDISPUTED **PRODUCTION CAPABILITY**

EXCLUSIVE FOR COOLING

4 Production Hubs

(9 Refrigerator Plants + 2 Freezer Plants)

21M

Units/YR
Annual Capacity

12,000+

Skillful
Production Staff

60,000+

Units Daily
Productivity

MES

Digital
Management

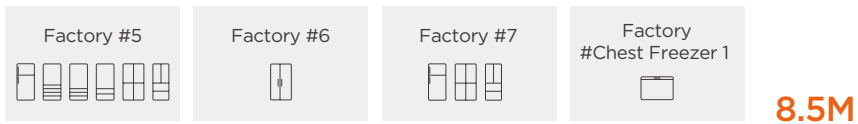
THE FASTEST GROWING COOLING SPECIALIST

Our strategic manufacturing footprint ensuring cost control, quality, and agility. With a centralised production mapping, we maintain operational stability and agile supply chain management, enabling Homa to deliver consistent excellence and respond swiftly to market demands.

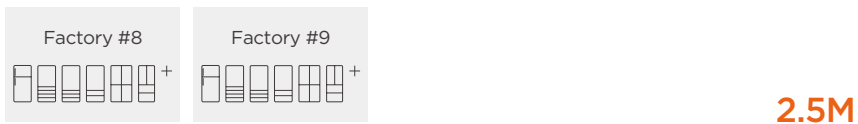
Headquarters Production Hub



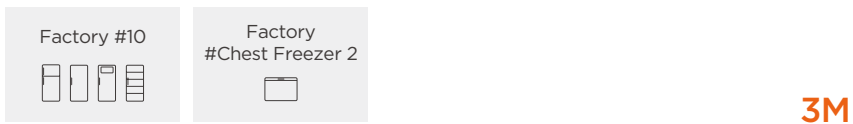
New Production Hub



Smart Production Hub (No-frost)

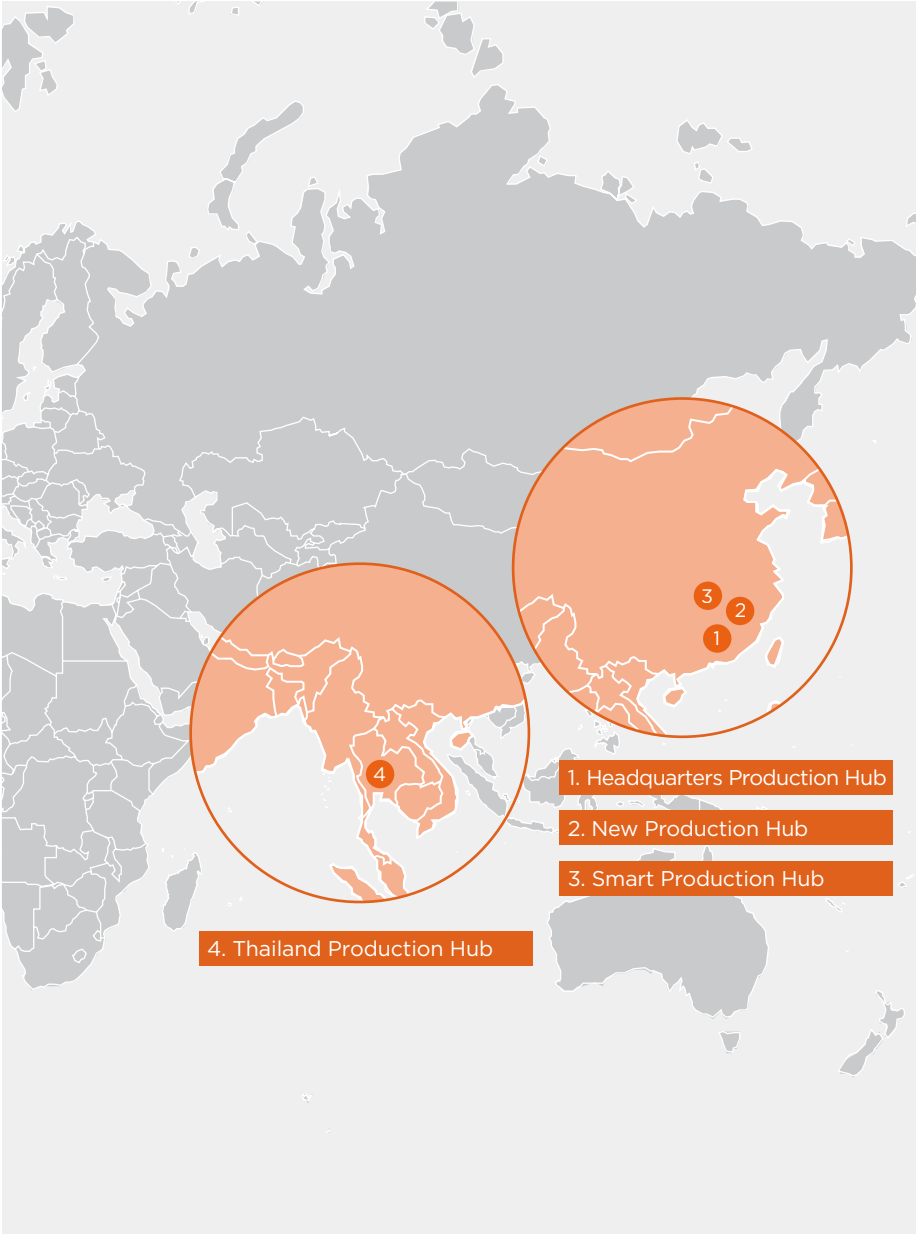


Thailand Production Hub



* Annual Production Capacity: Units
 All domestic factories are certified to ISO 9001 and ISO 14001 standards.

PRODUCTION MAPPING



QUALITY, EFFICIENCY & FLEXIBILITY FOR MANUFACTURING EXCELLENCE

Homa's manufacturing philosophy is built on seamlessly integrating quality, efficiency, and flexibility. As an ODM specialist, we go beyond production—our commercial team proactively translates market insights into meaningful product differentiation. Our R&D team works hand in hand with clients to develop tailored solutions that align with their brand identities while leveraging large-scale manufacturing to maintain competitiveness. Powered by an advanced MES system and digital tools, our quality management ensures precision, consistency, and continuous improvement. At the core of our operations are people and care, fostering both innovation and a workplace culture that drives excellence.





HANDLE



INSIDE



OUTSIDE



DISPLAY



2

SMART MANUFACTURING

Lean, Green, Smart, and Care



MOVING INTO THE FUTURE OF **COOLING MANUFACTURING**

With over 20 years of experience as a mature ODM specialist, Homa is advancing towards the future of smart manufacturing through a dual approach: global expansion and technological innovation.

Strategically, we are establishing a global ODM+ network to provide industrial solutions tailored to local markets. Tactically, we continue to invest in automation and digitalisation, with our flagship Smart Production Hub—completed in 2025—serving as a benchmark. Built on the principles of “Lean, Green, Smart, and Care,” it integrates cutting-edge automation, AI-driven testing tools, and digital management systems, setting new standards for smart, sustainable, and efficient manufacturing.



Our Brand New **Smart Production Hub**

■ Key Metrics

73,000 m²

Site Area

16,000 m²

Logistics Centre

290,000 m²

Campus Floor Area

2,500

Job Opportunities

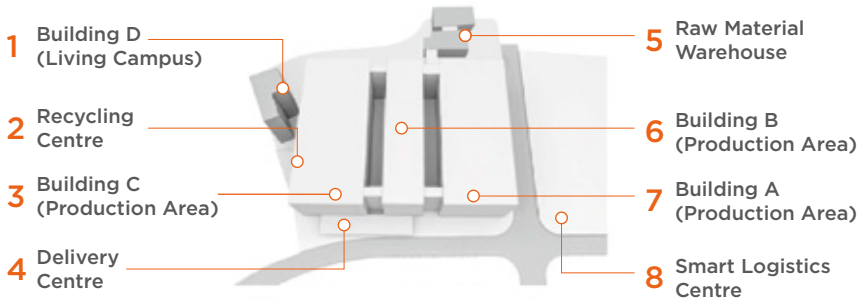
170,000 Units

Warehouse Storage

2.5M Units

Annual Production Capacity

■ Site Plan Map



1 Building D (Living Campus)

Work-live-play community with human-centred design, provides spaces for recreation and health

5 Raw Material Warehouse

Safe and well-organised management for chemical and non-chemical raw materials

2 Recycling Centre

Collection of recyclable materials and process them for secondary use

6 Building B (Production Area)

The production kicked off at the end of 2023, manufacturing components for big size no-frost products

3 Building C (Production Area)

The production kicked off at the end of 2023, for the big size no-frost products

7 Building A (Production Area)

Factory #9 kicked off production at the beginning of 2025, adding a capacity of 1 million units to the entire hub

4 Delivery Centre

Digital process enables efficient delivery of finished goods to clients worldwide

8 Smart Logistics Centre

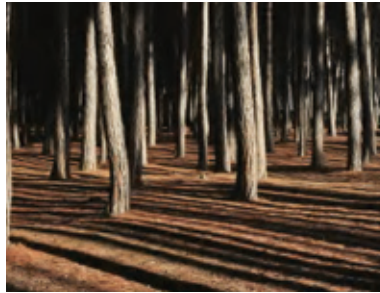
Efficient and digital fleet management

■ Navigation System

Smart Production Hub integrates two finished goods factories, components workshops, raw material warehouses, a logistics centre and a staff living campus, centred around a six-level building, unlike typical low-rise plants.

A clear signage system ensures efficient navigation.

Inspired by a forest, the signage features vertical lines drawn from tree silhouettes, echoing the building's facade. In the morning sunlight, trees cast an orange glow — a tone Homa incorporates into its signage, from building markers to room signs, blending functionality with architectural harmony.



■ Design Layout

Smart Production Hub is a rare industrial setup so close to residential areas, separated only by a narrow waterway. That's why our main goal during construction is to contain production noise, enhance traffic flow and delivery efficiency, and reduce emissions for a greener environment. Designed for both function and aesthetics, the district features interconnected passageways to improve staff mobility, creating a 10-minute walking cycle to any point. The vibrant orange passageways reflect Homa's passion for CARE, embodying our commitment to innovative DESIGN and superior FOOD PRESERVATION. This is where our dedication grows stronger.





Smart Management

Digitalisation

Guided by human-centric digitalisation, Homa balances efficiency with workforce empowerment. We use practical smart solutions: AGVs improve logistics, AI inspection checks product quality, and our MES system connects production data across all departments. With real-time monitoring on mobile devices and AI alerts, decisions are made faster, creating a connected factory where technology supports and enhances human collaboration.





Smart Management

Homa has upgraded its Smart Production Hub with Huawei's advanced smart management solutions. Completed in June 2025, the project enhances security, logistics, and energy efficiency through a digital twin ecosystem. Key features include 3D real-time monitoring, security patrols, personnel tracking, logistics optimisation, energy management, and environmental monitoring.





Smart Management

AUTOMATION



COMI | Integrated Vacuum Forming Machine for Inner Liner

*

Arçelik

Electrolux

Whirlpool

Haier

Hisense

Midea



YASKAWA | Side Panel Moving Robot

*



HENNECKE | Cabinet Foaming Machine

*

SIEMENS

GEELY



MAFFEI | Innovative Hybrid Foaming Machine

*



*Well-known companies using this equipment in their production lines.



3

**CARE
CULTURE**

DEDICATED CARE FOR **OUR PLANET**

Our Virtuous Circle with A Cost-effectiveness Philosophy

PRODUCT DESIGN	R600a ECO Refrigerant	CI+R600 ECO Foaming	Metal Replacing Plastics	
TECH. FOCUS	 Energy Efficiency Less Power	 Bigger Ample Space Less Shopping Shifts	 Longer Fresh Storage Less Food Waste	
PRODUCTION FOCUS	 Mass Production Higher Efficiency	 Carbon Emission Reduction via Clean Energy	 Digitalisation & Automation Reduce Energy Loss	 Pollution Control Smarter Chemistry
DELIVERY FOCUS	 Green Logistics Expansion	 Loading Optimisation	 Sustainable & Reliable Packaging	
AFTER SALES FOCUS	TSM + SPM	Increasing REPARABILITY & RECYCLABILITY for the Needs of Product Longevity		

SUSTAINABILITY

Our Latest Projects



Solar Panel

By the end of 2025, rooftop solar photovoltaic systems will cover all Homa manufacturing facilities, generating an estimated 16 million kWh annually and supporting more sustainable manufacturing.



Electric Trucks

Since 2023, Homa and Duckbill have deployed over 90 electric trucks, supported by dedicated charging stations at our logistics centre. With green shipping exceeding 67%, we continue to advance sustainable transportation.



Greener Packaging

Since 2023, Homa has been working closely with customers to advance packaging plastic reduction initiatives. We have achieved a 87.2% plastics reduction for our small-size products, and a 20-50% reduction for our larger-size products.

DEDICATED CARE FOR **CUSTOMER**

At Homa, it's not just about great products; it's about building lasting relationships. From the first purchase to the factory tour, we're here to make sure every step of your journey is smooth and satisfying. Feedback sessions are also employed in our guided tours to help us continuously enhance our service.



DEDICATED CARE FOR **HOMA PEOPLE**

Homa's Work-Live-Play campus promotes a healthy work-life balance with everything within a 30-minute radius. Our staff enjoy a canteen, gym, library, and recreation rooms, creating a space for both work and relaxation. As a factory close to a residential area, we ensure minimal noise and disruption, showing care not only for Homa employees but also for our surrounding community.

■ Living Campus

Our riverside living campus is a “work-live-play” community. Integrating recreation, fitness and study, the Homa way of CARE for our staff !

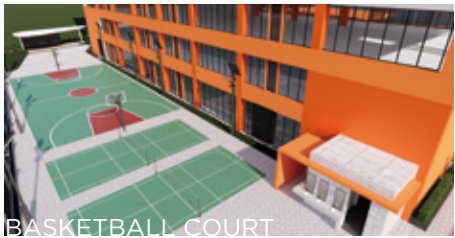


PEOPLE CARE



Our living campus is equipped with a double-floor canteen, library, gymnasium, table tennis room and billiard room.

We strive to provide our staffs with rich recreational activities after work.



The 4,000m² garden consists of basketball & badminton court, athletic track, spin bikes, reading area and riverside walkway.



Homa

A GUIDE TO HOMA'S BENCHMARK FACTORIES

At Homa, our benchmark factories showcase our manufacturing strength.

Scale provides the foundation. Our production capacity and skilled front-line workforce ensure stable delivery, but real competitiveness comes from turning scale into efficiency, quality and control.

We continually enhance our manufacturing system through digitalisation and equipment upgrades, refining processes, improving transparency, and maintaining consistent performance across operations.

Every factory follows a clear development pathway, progressing in a structured and measurable way. Continuous improvement drives how we work.

Benchmark factories reflect our current capabilities and guide our next steps.

What you see here are Homa's benchmark factories.

FACTORY #8

Factory #8, launched in October 2023, is Homa's most digitally advanced factory and specialises in producing No-Frost multi-door refrigerators with an annual capacity of 1.1 million units.

It features the most seamless and immersive production tour experience, showcasing advanced automation, precision assembly, and a fully optimised workflow.



83,187.6 m² Floor Area	1.1M Annual Capacity	1,000 Staff	1 Production Line	2,000 Units/Shift
---	--------------------------------	-----------------------	-----------------------------	-----------------------------



FACTORY #9

Launching in January 2025, Factory #9 is Homa's most flexible No-Frost production site, handling premium models from combi to multi-doors. With an annual capacity of 1.4 million units, it embodies Homa's best-in-class automation and process efficiency.



Multi-door (more versatile)

83,187.6 m²
Floor Area

1.4M
Annual Capacity

1,000
Staff

1
Production Line

1,500
Units/Shift



NEW FREEZER FACTORY #2

The Thailand Freezer Factory commenced operations in December 2025, becoming the first facility within Homa's overseas manufacturing base to enter production. Built on an efficiency-first production logic and equipped with the same automation systems and standardised processes used in China, the factory ensures globally consistent product quality. As Homa's first overseas plant to come on stream, it also provided a full-scale validation of overseas supply chain and manufacturing operations, marking a concrete step in Homa's global manufacturing expansion.



Chest Freezer

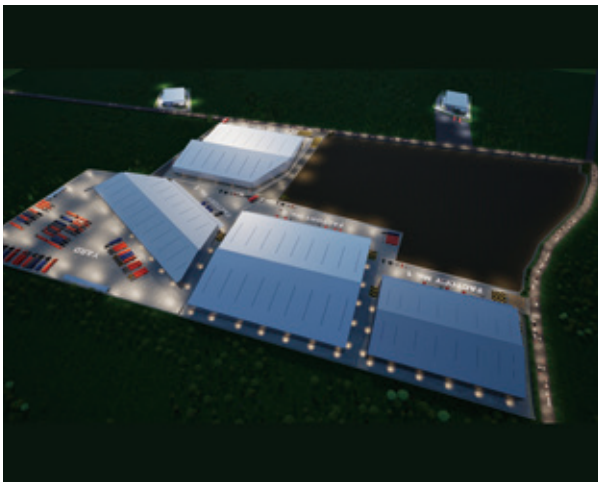
26,000 m²
Site Area

16,000 m²
Floor Area

0.6M
Annual
Capacity

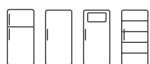
800
Staff

1
Production
Line



NEW REFRIGERATOR FACTORY #10

Phase I of the Thailand Refrigerator Factory is scheduled to commence operations in the second half of 2026. As a key component of the Thailand Production Hub, the factory is planned with the same efficiency-driven production logic and is designed to operate in close coordination with the freezer plant already in operation. Upon completion, the site will include supporting facilities such as offices and a product showroom, forming an integrated local operating base. The refrigerator factory will further strengthen Homa's supply chain resilience and overall competitiveness in the global market.



No-frost Combi, TMF, Upright

170,000 m²
Site Area

197,000 m²
Floor Area

2.4M
Annual
Capacity

2,500
Staff

2
Production
Lines



WE TAKE CARE OF
YOUR DREAMS

Homa

We Take Care of Your Dreams



Homa.cn



Homaeurope.eu



Instagram



Linkedin



Youtube



Rednote